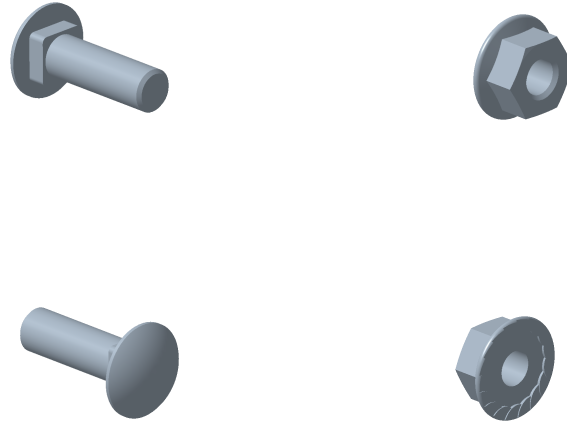


**Boulon TRCC - BTRCC
 BTRCC - TRCC bolt**

Reference(s) : 801 001/004/007/008/011/014/017/
 018/ 021/027
 350 401/402/403



1. GAMME / RANGE

Designation	Code	A		B		Poids / Weight		Classe vis / screw Class	Norme vis / screw Standard	Classe écrou / nut Class	Norme écrou / Nut standard	Finition / Coating	Classe de résistance contre la corrosion / Resistance class against corrosion
		mm	inch	mm	inch	(Kg)	(lb)						
BTRCC 6x12 EZ	801 001	12	0.47	1.5	0.059	0.0084	0.0056	4.8	ISO 898-1	8	ISO 898-2	EZ	Class 1 / IEC 61537
BTRCC 6x12 ZnL	801 007											ZnL	Class 6 / IEC 61537
BTRCC 6x12 304L	801 008											IN304L / SS304L	Class 9C / IEC 61537
BTRCC 6x12 316L	801 004											IN316L / SS316L	Class 9D / IEC 61537
BTRCC 6x12 ZnNi	350 401											ZnNi	Class 8 / IEC 61537
BTRCC 6x20 EZ	801 011	20	0.79	2.5	0.098	0.0103	0.0069	4.8	ISO 898-1	8	ISO 898-2	EZ	Class 1 / IEC 61537
BTRCC 6x20 ZnL	801 017											ZnL	Class 6 / IEC 61537
BTRCC 6x20 304L	801 018											IN304L / SS304L	Class 9C / IEC 61537
BTRCC 6x20 316L	801 014											IN316L / SS316L	Class 9D / IEC 61537
BTRCC 6x20 ZnNi	350 402											ZnNi	Class 8 / IEC 61537
BTRCC 6x30 EZ	801 021	30	1.18	2.5	0.098	0.0125	0.0084	4.8	ISO 898-1	8	ISO 898-2	EZ	Class 1 / IEC 61537
BTRCC 6x30 ZnL	801 027											ZnL	Class 6 / IEC 61537
BTRCC 6x30 ZnNi	350 403											ZnNi	Class 8 / IEC 61537

